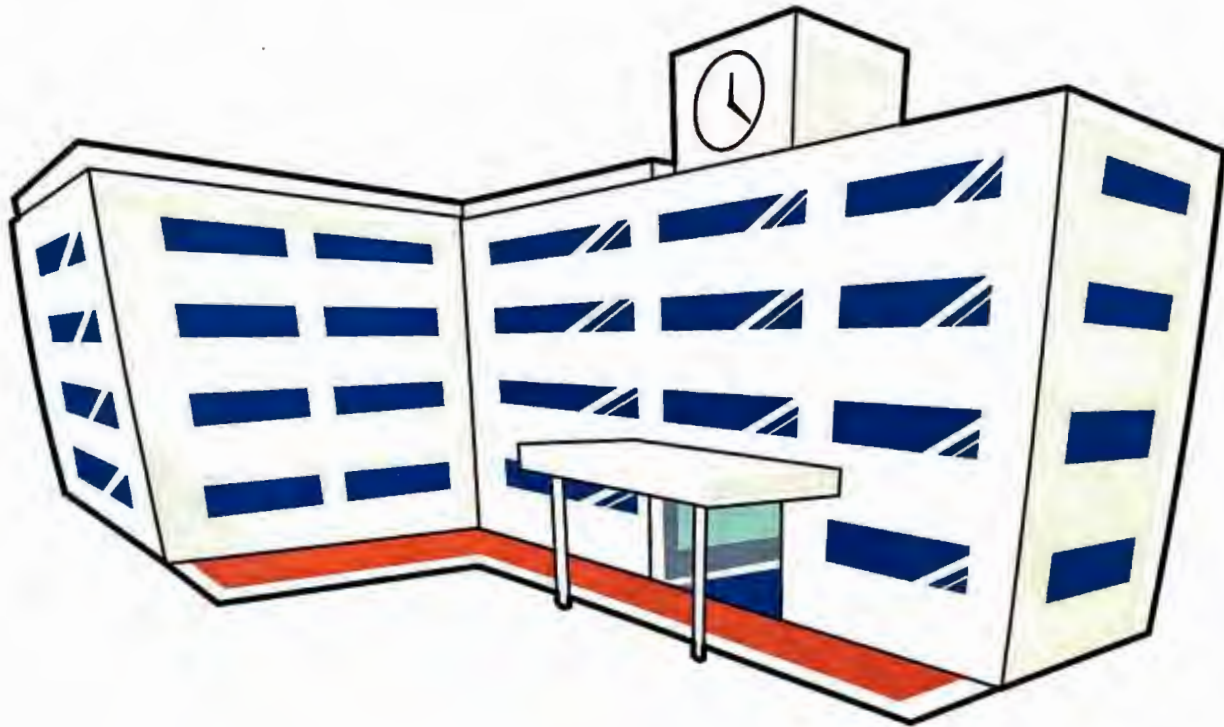




BILL CAMPBELL SCHOOL OF LAW



2011 BCSL Student Handbook

SPONSORS

EXECUTIVE PRODUCER

Alston + Bird
King & Spalding

PRODUCER

Deloitte Services LP

DIRECTOR

David N. Schaeffer - Chivilis Cochran Larkins & Bever LLP
Price Waterhouse Coopers LLC
Tin Lizzie Holdings, LLC
Troutman Sanders LLP

STAR

Garland Samuel & Loeb PC
Lawler, Green, Givelber & Prinz, LLC
Parker Hudson Rainer & Dobbs
Schiff Hardin LLP
The Partners Group
Triad Professional Services LLC
Vath Law LLC

CHORUS

Bell & Mulholland
Matthew Bernstein, CPA
Bondurant, Mixson & Elmore LLP
Robert D. Bordett, CFP®, CDFA, Collaborative
Practice & Mediation Services, Inc.
Fellows LaBriola LLP
Hunton & Williams LLP
Pachman Richardson LLC
Rogers & Hardin
Rita A. Sheffey
Taylor English Duma LLP
TSG Reporting, Inc.
Womble Carlyle Sandridge & Rice, PLLC



Break a leg:
Cathy O'Neil (Director)
Arlisa Brown
Pat Brumbaugh
Amanda Heath
Martha Henley
Jennifer Hubbard
Trinity Townsend

We are proud to support
the Atlanta Bar Foundation
and this year's production
"A Courthouse Line IX:
Law School Musical."

KING & SPALDING

www.kslaw.com

The Atlanta Bar Association and
The "Bard" Committee Proudly Present

A COURTHOUSE

LINE IX:

LAW SCHOOL MUSICAL



DIRECTOR AND CHOREOGRAPHER
Cathy O'Neil

ASSISTANT DIRECTORS
Steve Lang
Les Wharton

CO-PRODUCERS
Maggie Vath
Alison Arce

MUSICAL DIRECTOR
Kim Myers

**ASSISTANT PRODUCER
& DANCE CAPTAIN**
Lisa Nelson

PUBLICITY/PROGRAMS
Pamela Corvelli

PROPS/COSTUMES
Brandy Hughes

WRITING COMMITTEE
Brian Johnson, Chair
Steve Lang
Cathy O'Neil
Les Wharton

SPECIAL THANKS TO

Alspach Construction
Susan Atkinson
Briarcliff Baptist
Church

Peter Clements
J Golsan
Tanya Jefferson
Kelly Koelker

The Outstanding Atlanta Bar Staff
Diane O'Steen, Executive Director
Byron Lomas, Office Administrator

ACT 1

Prologue: New Students Arrive
Outside BC Law School

Scene 1 – Orientation
Dickel Courtyard at the BC Law School
“BC BC” – The Cast

Scene 2 – 1Ls Mingle
Dickel Courtyard at the BC Law School
“BC Law School Girls” – Tootie and Crew
(Martha Henley with Courtney McBurney,
LaKeitha Daniels and Nikki Crow)

Scene 3 – Dean Martin’s Dilemma
Dean Martin’s Office
“This Law School Cannot Close its Doors”
- Dean Martin and President North (David
Schaeffer and Michael Caldwell)

Scene 4 – Law School Bully
BC Law School Lockers
“Bieber” - Johnny Bieber (Jason Poulos)

Scene 5 – Civil Procedure Class
Professor Enwei’s Classroom
“Gunners, Geeks & Dweebs” – Ms. Kagen
(Hope Allen)

Scene 6 – The Lonely Librarian
BC Law School Library
“Emory” - Ms. Ross (Susan Atkinson)

Scene 7 – Criminal Law Class
Professor Turgeson’s Classroom
“It’s Not Unusual” - Bobby Lee Mellon (Marc
Clark)

Scene 8 – Let Me Tell You What Happened
The Halls of BC Law School
“Can’t Stop This Feeling” - Ferris Andersen
and Maggie (Brian Johnson with Maggie Vath)

Scene 9 – Final Exams
Professor Kingsfield’s Classroom
“Fail You” - Ms. Greene and Students (Vickie
Sadler with Teresa Bonder, LaKeitha Daniels
and Lisa Nelson)

Intermission: Approximately 20 Minutes

ACT 2

Prologue: First Semester Grades
The Halls of BC Law School

Scene 1 – Law Review Selection
BC Law Review Offices
“To Edit and to Cite Check” – Kathy and Me-
lissa (Erica Ghali with Teresa Bonder)

Scene 2 – Moot Court Recruiting
Outside the BC Law Review Offices
“That’s What Moot Court’s For” – Maddie,
Molly and the Mootios (Adele Vespa and
Donna Keeton with Jim Deichert and Carl
Johnston)
“Hot Tub” – Melissa (Teresa Bonder)

Scene 3 – Animal Farm
Dean Martin’s Office

Scene 4 – Can You Get Me into the Party?
BC Law School

Scene 5 – Jersey Shore Party
Jersey Students’ Apartment at Hoboken on
Peachtree
“Law School Rock” – Janitor King (Greg Pres-
manes)
“Let’s Hook Up” - Mandy “Baby” Pepperidge
(Courtney McBurney)

Scene 6 – The Next Morning
Jersey Students’ Apartment at Hoboken on
Peachtree

Scene 7 – Criminal Law Study Group
BC Law School Housing
“Ace’n the Exam” – Tina and Students (Susan
Mortimer with Vickie Sadler and Les Wharton)

Scene 8 – What About My Clerkship?
Chambers of the Honorable Judge Coleman
“I am a Dickel” - George Dickel (Kevin
Weimer)

Scene 9 – BC Law School Graduation
Dickel Courtyard at the BC Law School
“Graduate” - Graduation Singer & The Cast
(David Martin)

Featured Faculty Profile

Ronald Reagan Turgeson

Professor of Law

Areas of Expertise: Criminal Law and Procedure, First Amendment, Media Law, Education Law

Ronald Reagan Turgeson graduated from the University of New Hampshire School of Law in 1976. After a brief stint working on the Presidential campaign for the then governor of California, Jerry Brown, Professor Turgeson accepted a position as an adjunct professor of law at Akron University. While at Akron, Professor Turgeson taught Criminal Law, and ultimately, developed a specialty in First Amendment Law, while working with media mogul Larry Flynt, and in Education Law, while battling with Akron University over alleged indiscretions. Professor Turgeson joined BC Law School for a brief stint in 1982, but left BC Law School in 1987 to accept a tenured position at Nova Southeastern University Law Center, where Professor Turgeson continued his First Amendment scholarly pursuits and worked with Luther R. Campbell (aka "Luke Skywalker") and other persecuted South Florida artists. After a disagreement with Nova's administration over the applicability of the First Amendment to private universities, Professor Turgeson rejoined the faculty at BC Law School in 1991.

Professor Turgeson is the author or co-author of sixteen books, including: *What I do in my house is none of your business*, and the second edition, *What I do in my office is none of your business*, *Criminal Law in Georgia (How is that a crime if all parties consent?)*, and *You can't fire me for that! (How tenure does not mean what it used to mean so get it in writing)*.

Education: BA, California State University, 1973; JD, University of New Hampshire, 1976.

LAWLER GREEN GIVELBER & PRINZ LLC

CONGRATULATES THE CAST OF

**A COURTHOUSE LINE IX:
LAW SCHOOL MUSICAL**

3350 RIVERWOOD PARKWAY, SUITE 460
ATLANTA, GEORGIA 30339
770.563.8800 | INFO@LAWLERGREEN.COM

THE PARTNERS



GROUP

The Partners Group, LLC

Leading the Legal Profession Into a New Day
Permanent Attorney Search • Contract Attorneys and
Legal Staffing • Document Reviews & Discovery

404.221.9990

Garland, Samuel & Loeb
TRIAL ATTORNEYS

is proud to sponsor

**A COURTHOUSE LINE IX:
LAW SCHOOL MUSICAL**

PARKER HUDSON
RAINER & DOBBS

1500 Marquis Two Tower,
285 Peachtree Center Ave. NE
Atlanta, GA 30303 (404) 523-5300

*Proud Sponsor of the
Atlanta Bar Association*



HAVING A HARD TIME STUDYING FOR FINALS?

While many folks refer to it as “blackout in a can,” the Mootio’s strongly recommend and endorse FOUR LOKO as a preferred study aid. Four Loko is said to contain as much alcohol as 4 beers, and as much caffeine as up to 4 cups of coffee. It is available in multiple flavors including Grape, Fruit Punch, Citrus, Orange Blend, Watermelon, Blue Raspberry, Lemonade, Cranberry, and Lemon Lime. It is sold in 23.5 ounce cans, and contains between 6-12.5% alcohol content by volume. It also includes sugar, guarana, and taurine. (Everything a law student needs to get smart and strong).



NEED STUDENT LOANS? BAD CREDIT? FORGETABOUTIT! COME SEE BADA BING

If you are having problems with those Stafford Loan applications or if you have been denied private funding due to some past blemishes on your credit, don't worry BC students. The credit professionals at The Bada Bing Credit Source can help fund your student loan needs. The creative financial professionals at Bada Bing can get you a loan fast and with competitive interest rates. They will help motivate you to get that high paying job right out of school. Several repayment options are available. They can even assist in your relocation after graduation!



**BILL CAMPBELL
SCHOOL OF LAW**

The BC School of Law kindly asks that you help raise funds for the school by attending the:

“Save the School Sperm-Bank Blood Drive” on December 19, 2011.

The more money we raise there, the less we have to raise tuition for Spring semester!!!!!!

OUTLINES FOR SALE

Wass up my Ninjas! I've been at this law school for over 3 years now so I know a thing or 2 bout classes, studying, and stuff. So I got these outlines for sale. Buy them.

Text me yo.....Johnny Bieber: 404-555-5555.

MEMORANDUM

TO: BC Law Students
FROM: Career Development Office
RE: On Campus Interview Schedule

Due to some slight changes in legal market paradigms, we here at the BC Career Development Office offer the following revised schedule for on campus interviews: (Please be advised that unless you are in the top 5% of the academic class, you need not sign up for an interview slot)

10/1	U.S. Army
10/15	U.S. Air Force
10/20	U.S. Navy
10/21	U.S. Marines
10/22	The Salvation Army
10/23	Walmart
10/24	Home Depot (Please be advised there will be a math test administered)
10/26	FEMA
10/27	Al Qaeda Legal Services (postponed indefinitely)



Hoboken on Peachtree

Smells like Jersey!

Welcome Home to Hoboken on Peachtree. Our property is conveniently located near The Bill Campbell School of Law and is within walking distance of The Streets of Buckhead.*

Amenities include: 24-hour tanning beds, salt water pool (with boardwalk), 6 gyms, 4 laundymats, and 2 onsite clubs.

*Scheduled to be completed in 2025.

Microphones
generously
provided by

btv

B Touring Video

1910 Cobb International Blvd, Suite A
Kennesaw, GA 30152
Phone: (678) 594-7340
www.btouringvideo.com

VATH LAW, LLC

is proud to be a Star Sponsor of

**A Courthouse Line IX:
Law School Musical**

Maggie Vath
mvath@vathlaw.com
(678) 757-3634

EPSTEIN BECKER GREEN

www.ebglaw.com

ATLANTA | BOSTON | CHICAGO | HOUSTON | LOS ANGELES
NEW YORK | NEWARK | SAN FRANCISCO | STAMFORD | WASHINGTON, DC

BJay Pak,
you are one of our shining stars
... on and off the stage.

– *your colleagues and friends* –

 **SCHIFF HARDIN** LLP
www.schiffhardin.com

Atlanta | Boston | Chicago | Lake Forest
New York | San Francisco | Washington

ALSTON + BIRD LLP

is proud to support

**A Courthouse Line IX:
Law School Musical**

and

The Atlanta Bar Foundation

Atlanta | Charlotte | Dallas | Los Angeles | New York
Research Triangle | Silicon Valley | Ventura County | Washington, D.C.

www.alston.com



**ATLANTA BAR
FOUNDATION**
LAWYERS WHO SERVE

**Congratulations to
A Courthouse Line IX**

Bill Ragland
President, Atlanta Bar Foundation

TRIAD
PROFESSIONAL SERVICES

**IS PROUD TO SPONSOR
A COURTHOUSE LINE IX:
LAW SCHOOL MUSICAL**



Hope Allen (Ms. Kagen): Hope is always happy to be back home in the Bard Show/ A Courthouse Line. She first appeared in *A Courthouse Line V: Death By CLE* as the Psycho Wife, her favorite role since Petra (*A Little Night Music*) and Fruma-Sarah (*Fiddler On the Roof*), all roles with songs for the romantic in her. She was last a New Partner in *A Courthouse*

Line VIII: Saving Private Practice, and she looks forward to sharing the stage again with the fun and talented Bardians. She is currently working as a contract attorney for The Partners Group at Troutman Sanders LLP. Love to Mom and Dad in El Paso.



Alison Arce (Ms. White, Dancer, Co-Producer): This is Alison's 3rd Bard Show, and her first (possibly her last) as co-producer. When not tearing her hair out over the play, Alison is a partner in the firm of Arce|Shaw, LLC, specializing in family law issues, and a part-time judge sitting on the Fulton County Family Division. Don't even ask about her free time because she

doesn't have any. Alison would like to thank her parents for always being there for her, no matter what; her smart, sassy and successful girlfriends who make her look better just by being around; and Will, for being the love of her life and for his whinnying lessons.



Susan Atkinson (Ms. Ross, Finale Choir): A healthcare attorney at Atkinson & Associates by day and frequent actor/singer by night, Susan is thrilled to return to *Courthouse Line IX* as vocal coach and Librarian Ross following a scheduling conflict with the last show. Previously, Susan served as a writer and director of *A Courthouse Line VII: LAWst* and

as music arranger and vocal coach of Courthouse Lines V and VI, also appearing in the casts in such fabulous roles as Hariel (the singing pirate ship prow), Francly Graceless, and the diabolical Hotel Staffer Four! Susan appreciates the patience of her husband, Bill Atkinson, and their daughters Sally and Susannah.



Shakara Barnes (Mellon Associate, Dancer): Shakara is a Securities Litigation Associate at Troutman Sanders LLP in Atlanta. Originally from North Carolina, Shakara developed a love for the stage when she debuted in a 3rd grade version of *The Shoemaker and the Elves* that somehow ended with her in the principal's office. Shakara eventually discovered a love for

the law and has pursued that love ever since. Thanks to the Atlanta Bar Association, tonight her passions unite. She is not only an associate by day, she gets to play one on stage, too! Shakara enjoys singing, bowling, volunteering, and beating people at Scrabble.



Sid Barrett (Band): This is Sid's third appearance in the Bard Show Band on bass guitar and keyboards. In real life, he heads the Consumer Interests Section of the Office of the Attorney General. Sid enjoys hiking, painting, long walks on the beach, writing short stories, candlelit dinners, zombie movies, and massed automatic weapons fire. He would like to

thank his wife, architect Johnna Barrett, for allowing him to watch zombie movies and play music in dodgy places, and his children Kyle, Grant, Chelsea and Lexi, for leaving his musical equipment the hell alone.



Hon. T. Jackson Bedford Jr. (Graduation Speaker): Judge Bedford has been a cast member of *The Courthouse Line* since its 1998 inception. Having appeared in such unmemorable roles as the Skipper in *LAWst* and Senior Partner in *Saving Private Practice*, Judge Bedford promises this year's performance will be particularly unmemorable as he had to miss

the last two weeks of rehearsal due to a bicycling trip to France (Tough duty!). Judge Bedford thanks his wife Patty for tolerating yet another of his many avocations, as well as Cathy O'Neil and Les Wharton for their always impeccable casting flexibility. Judge Bedford is living proof of the motto "If they eat, breathe and show up – give 'em a part!"



Joyce Bergman (Marge): This is Joyce's debut performance with the Atlanta Bar Association and a huge leap out of character for her as Mr. Mellon's mousy minion Marge. She plans sweet revenge by authoring a sequel in which she will be featured as the terrifying Judge Starr Chambers. Seriously, she is happy to be on any stage anywhere in any capacity and profusely thanks

Cathy and the rest of the Production Team for giving her an opportunity to put future appearances before plain old juries and appellate courts into proper perspective. Thanks, too, to any and all friends and family who may have subjected themselves!



Pat Brumbaugh (Cameron): Pat Brumbaugh starred as Green Munchkin #2 in the Pinecrest Elementary School production of *Wizard of Oz* before returning to the stage in the demanding role of Law Firm Partner in *A Courthouse Line VIII*. Pat is a litigation partner at King & Spalding. Thanks to Ann, Lucy, and Jack for letting Daddy explore his artistic side.



Michael Caldwell (President North, Finale Choir): Michael is a labor and employment lawyer at DeLong, Caldwell, Bridgers & Fitzpatrick. A veteran of all 9 *Courthouse Line* productions, he has played (among other roles) a Janitor, Oompah-Loompah, Medical Examiner, Senior Law Partner (twice), and was *A Courthouse Line VIII's* "Defense Lawyer No.1." Don't

look for Michael to dance any jazz squares; the only step that he ever mastered was a soft-shoe routine taught to him by a fellow classmate who was an original Mouseketeer. Unlike her, he *never* became famous on stage or in films. He thanks his beautiful and talented Shoe Designer wife, Mary Jane, for her enduring patience and unflagging encouragement, and he swells with pride in both her and their son, Jon-Michael, who had the wisdom to choose (*non-veterinary*) medicine over law school (JM's "Plan B").



Teresa Bonder (Melissa, Finale Choir): Teresa is a partner at Alston + Bird LLP, practicing primarily antitrust and commercial litigation. Teresa is a member of the *Courthouse Line* 7-timers club. Her only other hobbies are the care and feeding of her favorite people, her son Sam (8), and daughter Ella (6). They are the lights of her life, although she likes her husband,

too. In fact, she would like to thank Scott for encouraging her in her Bard participation and for being a great father while she does participate.



Arlisa Brown (Flick, Dancer): This is Arlisa's very first show with the Atlanta Bar, and is she is extremely excited to be back on the stage with such a great cast. Arlisa appeared in a number of shows while a student at Emory University but traded in her theater dreams for law dreams. She is currently a project attorney at King & Spalding and, although she's not

on the stage there, she can satisfy the theater itch with the occasional song in the break room or an appearance in the firm's annual skit. Arlisa would like to thank her husband, Charles, and all of her friends and family for encouraging her to get back on the stage.



Marc Clark (Bobby Lee Mellon): Marc comes to this production having directed and performed nationwide in over 200 shows including *The Who's Tommy*, *Hair*, *JC Superstar*, *Evita*, *Amadeus*, and *Chess*. He was the founder of Shiloh Theatrical Productions in Florida where he served as Artistic/Executive Director for nearly 10 years. Marc left theatre as a profession

in 2001, embarking on a legal career for reasons still not completely clear. After spending four great years in the Public Defender's Office in Cartersville, he moved on to work with Cheryl Champion and her great staff. He sends love to his parents, son and Godzilla who sustain him.



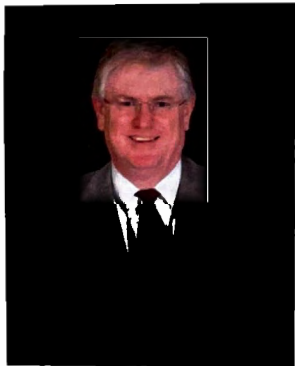
Jan-Michael Cohen (*Balky Smirnoff*): Jan-Michael ("Michael") joins us this year for his first role in a production of *A Courthouse Line*. Michael brings to the stage some highly exaggerated acting experience and, more importantly, shares his name with Jan-Michael Vincent, once the highest paid actor in American television. Michael will receive no

compensation for his performance as this year's outlandish Balky Smirnoff, but he looks forward to the reward of being typecast in future productions. Michael is an associate with Barrett & Farahany, LLP and practices labor and employment law. He would like to thank his friends and family for supporting the show and hopefully for helping him move out of his house by May 31st, immediately following the production.



Dominick Crea (*Judge Coleman*): Dominick is a second year cast member of the show. A graduate of UT (Texas) Law School, he practiced law as a US Army Judge Advocate for twenty years and the Georgia Attorney General's Office for seven years before serving as the Legal Advisor to Agriculture Commissioner Tommy Irvin and then State

Inspector General James E. Sehorn. Dominick lives in Jonesboro with his wife Mariella, son Alfred and mother-in-law Jacqueline.



Jim Coots (*Rehearsal Pianist/Keyboardist*): Jim is a UGA "double Dawg." Currently, he serves as a Senior Assistant Attorney General with the Georgia Department of Law, focusing primarily on environmental coastal matters. Aside from his legal endeavors, Jim enjoys playing piano and is currently the pianist for Heritage Presbyterian Church in Acworth.

This August Jim will return to his home church, First Presbyterian Marietta, as staff accompanist and assistant organist. Jim is happily married to his beautiful wife of 26 ½ years, Jan (also a UGA grad), and together they enjoy spending time with their two wonderful daughters who are currently attending UGA.



Terrence Lee Croft (*Janitor 2*): Terrence is the most senior member of the cast and has appeared in every single Bard Show. He was a drama major at Yale and has been a performer in the courtroom as a trial lawyer since graduating from the University of Michigan Law School. He is a past president of the Atlanta Bar Association and is presently a member of

the Board of Governors of the State Bar of Georgia. He is a full-time mediator and arbitrator at JAMS, The Resolution Experts and the managing partner of King & Croft, LLP. He and his lovely wife Merry have six children and nine grandchildren, five of whom are also thespians.



Pamela Corvelli (*Program Coordinator*): Pamela is happy to be participating (off stage) in her 2nd production of *A Courthouse Line*. As much fun as she had in *Saving Private Practice* as a singer/dancer, she doesn't mind the excuse that kept her off the stage this year – a baby boy who is due at the beginning of June. Pamela recently opened her own office

in which she offers mediation services, small business representation and criminal defense services. She thanks her husband Anthony for all of his support through the craziness that is life and sends a big shout-out to the entire cast of *Law School Musical*: BREAK A LEG!



Nikole Marie Crow (*Snuggie*): Nikole studied theatre at Georgia State University and the National Shakespeare Conservatory in New York and ultimately obtained a useless BA in Theatre. Tired of the phrase, "So you're an actor, what restaurant?" Nikole obtained a law degree from Georgia State University and became a litigator (a/k/a actor who gets paid). She

is currently counsel at Smith Moore Leatherwood, LLP in the Life, Health & Disability /Erisa litigation practice group. Her favorite past-time is snuggling with her amazing one-year old son Gabriel.



La'Keitha Jonise Daniels (*JDeez, Dancer*): La'Keitha is a reformed lawyer. Once a big time (ok, small time) litigator turned corporate in-house attorney, she has recently left the law behind to open a bakery, appropriately named Sweet Justice. Trading in briefs for buttercream has also allowed her to star in her third Bard Show in grand style as a real

Jersey girl. The Shore doesn't stand a chance with her walking the beach!



Shaun Daugherty (*Professor Enwei*): Shaun is from the areas around a sleepy little town in southwest Ohio called Dayton. It is a long and relatively uninteresting story that brought him to his current location. Shaun is the proud husband to Richelle, a Georgia girl by birth and world traveler by experience and is the proud father of three, Caitlin, Matthew

and Abigail. Shaun enjoys spending Saturday or Sunday mornings looking for golf balls that he has placed deep into the woods. He also enjoys cooking and was reported to have recently said: "There is nothing better than the feel of a warm oven mitt." Shaun is known to enjoy the occasional frosty adult beverage, and, when pressed for the truly unknown, he would sheepishly reveal that he is a World of Warcraft player. His character...? Not surprisingly, a dwarf.



Jim Deichert (*Mootio*): After 25 years prosecuting organized criminals with the Justice Department, Jim now focuses his litigation practice at Fellows LaBriola, LLP on white-collar criminal defense and civil RICO. This is Jim's sixth Bard Show. His resume includes a long history as a song and dance man with the Embry Hills Players at the Embry Hills

United Methodist Church. He enjoys the camaraderie with his fellow performers as much as performing. Jim appreciates the patience and support of his wife Riley, as he faces the daily temptation to give up his day job for a career in the theatre.



Derin Dickerson (*Band*): Derin is back for his second Bard production, and, because he is the drummer, there is no chance you will miss his performance. When not playing music, Derin is a litigation associate with Alston + Bird, handling complex class actions and product liability cases. He recently celebrated his 10th anniversary and, shockingly, used it as an excuse to miss a run through! He will have to become much more serious if he hopes to carve out a niche as a drummer for Bar shows around the country.



Hon. Sara Doyle (*Student, Dancer*): Once again, Sara reprises her role as background dancer. A former assistant director and choreographer of previous Bard shows, Sara is best known for her performances as a suspected murderer in *Death by CLE* and a lip-singing Britney Spears in *No Business Like Law Business*. When she is not

singing and dancing, Sara is a judge on the Georgia Court of Appeals; she used those skills in judging the Atlanta Bar Foundation's 2010 Battle of the Bands. Sara sends a special thanks to her husband Jay for continuing to tolerate her desire to be on stage.



Erica Fenby Ghali (*Kathy, Finale Choir*) is an attorney in the Litigation and Trial Practice Group at Alston + Bird. Her practice focuses on complex commercial litigation, with an emphasis on high stakes trials. A proud graduate of the University of Michigan Law School, Erica dedicates this performance to her law review note editor (and husband), Kamal Ghali. Thanks and enjoy the show!



Mike Hawkins (*Band*): Mike is a very serious DUI defense lawyer during the day and a very serious guitar player at night. When he is not busy playing lawyer or guitar, he is not very serious at all. A graduate of Emory University School of Law and a former (very serious) prosecutor, Mike devotes his practice to defending the rights of those accused of DUI and

related offenses. He was recently named a Municipal Court Judge in Dunwoody, and also serves as Chairman of the Board Certification Committee for the National College for DUI Defense (the certifying body of the American Bar Association). He has been Board Certified himself as *Very Serious in DUI Defense* since 2001. He lives in Dunwoody with his beautiful wife, Jennifer, and their two young sons, Will and Ryan, none of whom seem to take him very seriously.

would like to thank her husband Simon for rearranging his schedule and mastering the solo bedtime routine (unintentionally memorizing "Go, Dog, Go" in the process) to accommodate rehearsals. Thanks also to Sam for going easy on Dad (most of the time).



Amanda Heath (Student): Amanda is a native of Memphis, Tennessee, with roots grounded in Georgia through her parents Morris and Ella. She attended Hampton University for her undergraduate studies and majored in Sociology. Amanda studied law at Mercer University Walter F. George School of Law. She aspires to work for the federal government in

the Department of Justice. This is Amanda's first time performing in a *Courthouse Line* production and she is excited to be a part of the Bard family.



Jennifer Hubbard (Red): Jennifer got her first real taste of the stage in her Beginning Drama class taught by the unforgettable Ed Deavers. It was the lesser of three potential disasters, given that everyone had to take an art elective. There was little hope of her passing anything that required drawing, and she was then shy about singing. After

her theatrical debut, she discovered a new life. Jennifer strived to stay connected to her creative heartstrings while simultaneously embarking upon her legal career. She is thrilled to participate in *Courthouse Line IX* to share what some have affectionately called her "hidden creative."



Christina V. Hendrix (Trixie): Favorite Quote: Ever been stuck with one leg on your kitchen counter and the other on the island while you tried to beat a rabid raccoon off your plantation shutters with a rolled up piece of old newspaper? Me neither. Just Sayin.' This is Ms. Hendrix's third Bard show performance.

In all three she's played a ditzy female of some sort. We assure

her its coincidental. Hey, if she believes it. Ms. Hendrix is straight outta' Compton. Compton Elementary in Powder Springs, Georgia. There she "played well with others" though her listening skills "needed improvement." Christina Hendrix is an attorney at The Hendrix Law Firm, P.C. where she practices Immigration and Criminal Defense. She would like to thank her husband, Kyle, for taking care of the children while she rehearsed and for her two girls, Catherine and Primrose for being themselves-which is quite enough.



Brian W. Johnson (Ferris, Writing Committee Chair): Brian adds to his wide repertoire of character acting this year as the 3L "clean cut/nice guy" Ferris, with past appearances as an elder statesman/managing partner in *Courthouse Line VIII*, the nerdy "IT" guy, in *Courthouse Line VI* and the gay/lovelorn key grip in *Courthouse Line V*. Brian's past credits include

singing with the Broadway cast of *Aspects of Love*, Birmingham Community Theater, church choirs, weddings, and karaoke. Brian is a partner at Drew, Eckl & Farnham, LLP practicing general and commercial litigation, insurance defense, and personal injury. Brian is also an Arbitrator for the Better Business Bureau. Brian would like to again thank Nuni for her patience and support and sends love to all his family.



Martha Henley (Tootie, Finale Choir): Martha is thrilled to be playing "Tootie" in her first Bar Show appearance. Martha is a healthcare litigation associate with King & Spalding. After chickening out for several years, Cathy O'Neil finally convinced Martha that the odds of breaking her neck doing a "jazz square" were extraordinarily low. Martha



Laura K. Johnson (Bernice, Finale Choir): Laura returns to the stage as Bernice after being absent from the Bard since *A Courthouse Line I*. As an employment lawyer, she finds it imprudent to be funny (or even try) more than once per decade. In her off-stage hours, Laura plays the role of a Chief Assistant County Attorney for DeKalb County, Georgia.



Carl Johnston (*Mootio*): After many years of singing with The Choral Guild of Atlanta and other Atlanta-area community choruses, Carl is excited to be taking to the stage. He is a corporate partner with FSB FisherBroyles. Carl would like to say thanks to his son Greg for his patience and enduring endless choruses of "That's What Moot Court's For."



Donna Keeton (*Molly, Finale Choir*): Donna is pleased to be performing in her 4th Bard Show, after taking a hiatus from participation in the last show due to work commitments out-of-state. This year, Donna is performing as one of the Moot Court members and, as in past shows, is thrilled to have the opportunity to sing somewhere other than in her shower or

in her car. Donna is currently an attorney at Martenson, Hasbrouck & Simon, where she specializes in labor and employment matters, representing employers throughout the country. Donna would like to thank her family and everyone at her firm, especially the partners, for supporting her participation in the show.



Kelly Koelker (*Rehearsal Accompanist*): Kelly is happy to be a part of the Bard Show again this year, assisting at the keyboard as Rehearsal Accompanist. Kelly previously served as Accompanist for *Courthouse Line VI* and Music Director for *Courthouse Line VII*. When not playing the piano, Kelly is part-time Counsel at Ashe, Rafuse & Hill, LLP, team

mom for her daughter's basketball team, or likely to be found working in her vegetable garden.



Steve Lang (*The Hypothetical, Assistant Director*): Steve made his theatrical debut in *Porky's 3: Revenge* (1985) where he played "student at high school basketball game." Tremendous success followed, including roles as "soccer player at Fourth of July Picnic" in *Russkies* (1987) and "student attending graduation" in *Only the Strong* (1993). Like many childhood actors, Steve made

many mistakes culminating with his decision to go to law school in 1995. In *A Courthouse Line IX: Law School Musical*, Steve plays "The Hypothetical" drawing upon his vast experience playing a student. In his spare time, Steve practices corporate and securities law and is an avid runner.



David Martin (*Schwartz, Graduation Singer*): After a brief hiatus from his calling as a performer to attend law school and practice law for a few years, David has returned to take the stage again – for the first time in a couple of decades. Recently arrived to Atlanta from Los Angeles, David has the pleasure of working again with Cathy O'Neil, who had the unenviable

task of trying to keep him in line and focused while directing a number of shows in law school. While David has enjoyed meeting many new lawyer/thespians in the Atlanta legal community, David has been reminded why his true calling is the law – when it was suggested that he "break a leg" by a friend, his thoughts immediately ran to liability coverage and health insurance.



Courtney McBurney (*Mandy "Baby" Pepperidge, Finale Choir*): Courtney is excited to join the show for a second time in *Courthouse Line IX*. When she is not singing, Courtney works in the legal department at GE as the Compliance Leader of the Energy Services business. She thanks her husband Robert for taking great care of the three

little guys and two little dogs during countless rehearsals and sends big hugs to Alex (10), Calvin (3), and Roscoe (8 months).



Hon. Christopher J. McFadden (*Professor Kingsfield*): Chris McFadden is an appellate judge and washed-up bar politician. A veteran of Bard Shows I, II, III, IV, VII, and VIII, he began his theatrical career as *Peter Pan's* shadow in a community theatre children's drama class. Since then he has played a wide variety of character roles, including sniveling henchman

"Renfield" in *Dracula*, "Geoffrey," the least appealing son, in *The Lion in Winter*, and court-bashing reporter "E.K. Hornbeck" in *Inherit the Wind*. None of these roles, he avers, were type casting. Except perhaps Peter Pan's shadow.



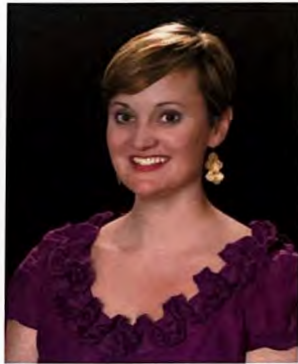
Michael Melonakos (Ralphie): This is Michael's second Bard Show performance, and second consecutive Bard Show where his character receives a beating. He is an associate at Goodman McGuffey Lindsey & Johnson, LLP where his insurance defense practice consists of representing insurers and insureds in a variety of automobile, trucking, and

premises liability actions. Michael may also be recognized from other Atlanta Bar events such as LawJam 2010, where his law rock band, Mikey Mel & The JDs performed such hits as "The Library Stacks" and "Space Lawyer". When he's not obtaining defense verdicts or memorizing lines for the Bard Show, he plays tennis, hangs out with his wife, and walks the dogs. He would like to thank Brende, Hank, and Charlie for supporting his participation in the nation's greatest lawyer musical.



Hon. David E. Nahmias (Mr. Aamias): Dave has been in the cast or crew of *A Courthouse Line I, II, III, and VIII* because he likes to see his wife, Director Cathy O'Neil, occasionally during show season! Cathy has cast Dave in roles demonstrating that he can't sing, dance or act, but he can talk. And being that he is now a judge, people at least pretend

to listen to him. Dave thanks the cast and crew for a great show and for providing a great service to the Atlanta Bar!



Lisa Nelson (Ms. Blond, Dancer, Assistant Producer, Dance Captain): Lisa is excited to be back for her third show and her second year as an executive committee member. She is a project attorney at Alston + Bird LLP by day and a world traveler whenever possible. Lisa would like to thank her friends and family for encouraging her inner "Diva" and indulging her need to

be on stage every couple of years. Thanks for the love and support! Enjoy the show!



Susan Mortimer (Tina, Finale Choir): Susan is a veteran of many bar shows and has performed in musicals and other productions since she was a kid. She was formerly lead vocalist with the Atlanta Swing Orchestra until being a mom to her 5 year old Jimmy eliminated most of her spare time. Susan is a financial investigator and lawyer who has recently moved into a

new career as the Southeast Region Solutions Consultant with LexisNexis Business Insight Solutions.



Cathy O'Neil (Director/Choreographer, Writing Committee, Dancer): Cathy is one of the co-founders of the *Courthouse Line* series. She has served as writer, director and/or choreographer for every Bard production since 1998, except for two she missed while living in Washington, DC. She also performs when she is not needed backstage, and this year

you will see her cartwheeling, tapping and dancing. Cathy is a litigation/government investigations partner at King & Spalding and now uses her theatrical experience primarily in trial. Cathy thanks her husband, David Nahmias, and her two sons for putting up with missed dinners and bedtime stories again this year. She also thanks the tremendous production team and cast for making this a great show!



Kimberly L. Myers (Music Director, Show Pianist): This is Kim's sixth venture as Music Director/Show Pianist for *A Courthouse Line*. Off the piano bench, Kim enjoys home renovation and gardening projects with her husband Lou Dardi at their Decatur home and Ellijay cabin, and practicing law at Rogers & Hardin where she is a litigation partner specializing

in antitrust and securities matters. Kim would like to extend Gigantic Thanks to Lou (for late-night meals and ever-present support); Jim Coots and Kelly Koekler (rehearsal assistance); Susan Atkinson (vocal arrangements); and the Boys in the Band (you're all tremendous -- here's to jammin' in *Courthouse Line X!*).



BJay Pak (Mr. Pak): BJay is a partner with Schiff Hardin LLP, where he practices in the area of white collar criminal defense and complex litigation. He is a veteran of three *Courthouse Line* performances, having served as the Writing Committee Chairman, Associate Producer and Executive Committee member. When he is not

practicing law, he serves as the State Representative for District 102 (R-Lilburn) in the Georgia General Assembly. His notable legislative accomplishment this session was his unsuccessful attempt at prohibiting sales of alcohol on Saturdays, as it is the true Sabbath. He thanks his most precious constituents -- his wife Sandra and his daughters, Sophia and Madeleine.



Jason Poulos (Johnny Bieber): Jason is a senior in-house litigator with Georgia-Pacific LLC. Prior to that, Jason was an associate at Alston + Bird. Jason has performed in four prior Bard productions, always with memorable musical performances including "Devil Went Down to Law School" and "Briefwriting" (to the tune of *Grease* favorite "Greased

Lightning"). Jason believes the Bard show is a great way to have fun and support a wonderful charitable cause at the same time.



Gregory Presmanes (Mr. King, Finale Choir): Greg has been a cast member of all but one of the Bard shows. He plays the part of Janitor Mr. King, singing "Law School Rock" in this year's production of *Law School Musical*. He has been accused of looking like Barney Fife, deputy in Andy Griffith's Mayberry. He has played lots of parts, but one he enjoyed a lot was his portrayal of a demented Zell Miller, popping his cork.



Vickie Carlton-Sadler (Ms. Green, Finale Choir): Vickie is a proud third-time Bard Show cast member. In previous productions, she has played the challenging and most demanding roles of Associate and Fired Associate. She is currently appearing as disgruntled low-achieving Student Ms. Greene. Vickie is no stranger to the theatre and

periodically performs in local theatre productions. Vickie is the Managing Member of the recently formed Carlton Sadler Law Group LLC and practices law in the areas of commercial litigation, construction, and government contracts. Beginning this fall, Vickie will be an Assistant Professor of Law at John Marshall Law School. She would like to thank her supporting fans, including her husband John Sadler, her adorning family and friends. We do it better together!



Don Samuel (Professor Turgeson): Don takes the stage again this year cast in a role that seems quite out of character. After all, in real life, Don is a kindly, modest criminal defense lawyer with Garland, Samuel & Loeb, and displays no eccentricities whatsoever. Don is a veteran of the Bard productions, appearing in every single production since 1998. He has never lost a Bard. He cannot say the same for his trials.



David Schaeffer (Dean Martin, Finale Choir): David, former President of the Atlanta Bar, has valiantly acted, sang and danced in every Bard Show since its inception. Candidly, he has succeeded only in the singing aspect. Memorable roles include: Cameraman in *No Business Like Law Business*, which David also directed; a barbershop-

singing janitor in *Comity Tonight*; the head coroner in *Murder by CLE*; and a disgraced Enron exec in *Phantom of the Courthouse*. David is also the author of *Big Five Mountains*, an award-nominated book about climbing five major mountains -- now available on amazon.com. David recently joined Chivilis Chochran Larkins & Bever, specializing in business litigation.



Rita A. Sheffey (School Announcer): Rita's first Bard show appearance was as an unwitting audience participant in *A Courthouse Line III - Comity Tonight*. One of the show's "janitors" attempted to clear the row Rita was sitting in to catch a rat supposedly loose in the audience. Rita wouldn't budge from her seat, challenging David Schaeffer's acting ability.

Rita's next performance was a cameo role in *A Courthouse Line VII - LAWST*. She takes the stage now as the School Announcer. Rita is a litigation partner at Hunton & Williams and on May 25 will become the 104th President of the Atlanta Bar Association.



Karen Shelley (Student): Karen makes her debut this year and is excited to perform with the Atlanta Bard. She has spent her whole life performing musicals with her sisters and friends in living rooms using a hairbrush as a microphone. Her theatrical experience includes performing at Walt Disney World in parades and shows in Orlando, FL. She

practices criminal defense and lives with her dog Roxanne. This show is dedicated to her mother, Linda, and Elton, her dog that recently passed away.



Bonnie Smith (Student): Bonnie has been a prosecutor for almost 13 years. This is her second appearance in a Bard show production. Bonnie has no formal training in acting, which probably explains why she's playing a character that didn't merit a name. Bonnie would like to thank her perfect nephews for being the only people on the planet who are entertained when she sings or dances.



Michael Terry (Band MC): Michael, current President of the Atlanta Bar Association, is appearing in his first Bard show. To avoid having members of the audience confuse him with Don Samuel, Mike volunteered to shave off his beard. Mike is also a partner in the firm of Bondurant, Mixson & Elmore, LLP.



Trinity Townsend (Mr. Pink): Trinity is very happy to be taking his talents (as meager as they may be) to the 14th Street Playhouse for *Courthouse Line IX*. He has performed in several community theatre offerings, most notable, *Victor Victoria* and *A Funny Thing Happened on the Way to the Forum*. Once upon a time, Trinity was a high school teach and professional

runner. Now, he's an attorney (oh, how the mighty have fallen). Trinity is an author whose book, *When The Cops Come Knockin* co-written with his brother, Travis, teaches young people how to avoid getting into trouble with the law. Trinity would like to thank all family and friend who have supported over the years.



Maggie Vath (Maggie, Dancer, Finale Choir, Co-Producer):

This is Maggie's 8th *A Courthouse Line* production. Behind the scenes, Maggie has served as a member of the Executive Committee in five shows. On stage, Maggie's roles have included First Lady Hillary Clinton, a Mermaid hoping for a Judgeship, a

disbarred lawyer turned French maid, a prissy know-it-all, a slip and fall lawyer, 24's Chloe, and a love-struck hippie. In real life, Maggie is the founding partner of Vath Law, LLC and is also an adjunct professor at Georgia State College of Law. Maggie would like to send a special thank you to her husband Michael (hi! Looking forward to seeing you in person!) her son Vincent (sorry missing bedtimes to "sing and dance with friends"), and to her first, and biggest, fan Grandma (I miss you!)



Adele Vespa (Maddie, Dancer, Finale Choir): Adele is currently a Project Attorney with Alston + Bird. She is also a registered mediator and arbitrator with BAY Mediation & Arbitration Services, LLC. Adele fondly remembers some of her past *Courthouse Line* roles since 2000, including Christine in *The Phantom of the Courthouse* and her solo to Jewel's "Foolish/Poolish

Games", backed by long-legged synchronized swimmers delighting the audience. She was the Assistant Director for *No Business like Law Business* (2005) and Co-Producer of *LAWst* (2007). Locally, she has starred in musicals at Stage Door Players, and as a Jewish Momma in *The Last Night of Ballyhoo* at Decatur's Neighborhood Playhouse.

Appropriately cast, Adele was on Capital University Law School's National Moot Court Team, and was also a Member and Notes' Editor of Law Review.



Kevin Weimer (*George Dickel*): Kevin is a partner with Bard Show sponsor Fellows LaBriola LLP, where he represents corporations and businesses of all sizes and individuals in a wide range of matters, including business and commercial litigation, employment litigation and counseling, and complex plaintiffs' cases. He appreciates referrals. Kevin is enjoying

his sixth consecutive Bard Show and is glad to have the opportunity to perform a solo that is not about mayonnaise (See *A Courthouse Line V: Death by CLE*). However, he continues to be concerned that his Bard Show characters frequently suffer from a penchant for sexual harassment, as this year is no exception. Kevin thanks his patient and understanding wife for enduring lonely nights without him while he pretends to be an actor and singer.



Elizabeth Wharton, (*Blair, Dancer*) Elizabeth is thrilled to be allowed back on stage amongst such talented attorneys in her fifth bard show. Each *Courthouse Line* has provided training for her off-stage roles as a corporate transactional associate and member of the HBSS Government Affairs team. She is grateful to HBSS, David, Chance and Bea for their con-

tinued patience and support with all of the rehearsals and practices preparing for the show.



Les Wharton (*Vinne Spicoli, Writing Committee, Assistant Director*) Senior Counsel, Epstein Becker & Green. When Cathy asked if I would help with the show, in the back of my head, I could hear my father saying, as he always did, that I ought to forget about that acting nonsense and do something productive. Yes sir. I am thankful that my wife Patsy continues to

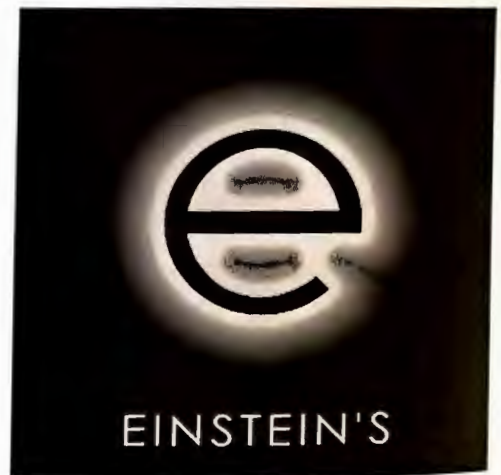
let me do the show (my 6th). I do not mean to imply that I must ask permission, as I most certainly do not...do I dear? My now grown children have always been supportive—not sure whether they are laughing with me or at me, except lawyer Elizabeth, who is in the show, and is no doubt doing both. That leaves the dog, and I am most appreciative that she does not bite me as much anymore. Once again, this one's for you, Big Rob!



Edward Wynn (Mikey): Edward is appearing in his second Bard Show. He practices personal injury with Eric J. Hertz, P.C. in Norcross. When not wearing the lawyer hat, Edward enjoys working with Step Up, Atlanta a non-profit he co-founded (find us on Facebook!). He also serves on the board of the Crime Victims Advocacy Council an organization that provides

support to families that have lost loved ones to violent crime. Edward thanks his family and friends for their love and support, as well as Claudia Barnes for encouraging him to audition for the show two years ago. What a ride!

EINSTEIN'S IS HAPPY TO
SUPPORT THE BARD!
COME SEE US AFTER THE SHOW.



Bring in this coupon for
1 free dessert per table.
Coupons may be combined.
1 coupon good for up to 4 people.

12TH & JUNIPER STREETS
1077 JUNIPER ST
ATLANTA, GA 30309
PHONE: 404.876.7925

IST

**Innovative Service Technology
Management Services, Inc.**

**Programs generously provided by
IST Management Services, Inc.,
proud sponsor of the Atlanta Bard**



1180 PEACHTREE STREET, NW
(AT 14TH STREET) ATLANTA, GA.
404.347.2220
tapat1180.com

Present this ad to your server to receive this special offer.

\$10 off at TAP when you spend \$20 or more.

One per table. Does not include alcohol, tax or gratuity.
Cannot be combined with any other offer. No cash value. Dine in only.

SPECIAL OFFERS FOR OUR NEIGHBORS



\$5 OFF

(Buckhead, Midtown or Grant Park)

Present this offer and receive \$5 off any order of \$25 or more. Not valid with any other offer or discount.
Expires 6/30/11 tlcSS01

TINLIZZYSCANTINA.COM

A Courthouse Line VIII's
piano is furnished by



We have great deals on Grands, Uprights, and Digitals

OUR SERVICES INCLUDE

Tuning • Moving • Refinishing • Restoring • Estimates • Sales • Lessons

Make your piano a player. We install player units on any piano.

*With 30 years experience,
you can trust us to take care of all your piano needs.*

Come visit our new location in Newnan and sign up for lessons. We also have a recital stage available for teachers and students throughout the year. See you soon!

MARIETTA
770-422-1224
3405 DALLAS HIGHWAY
MARIETTA GA 30064

NEWNAN
770-252-7769
1690 HIGHWAY 34 EAST
NEWNAN GA 30265

catherine love

PHOTOGRAPHY

Portraits ~ Weddings ~ Events
Maternity ~ Babies ~ Families
Head Shots

catherinelo e.net 404-914-8154

* 20% off when you mention
"Law School Musical"

Deloitte.

Instilling confidence
by inspiring it.

Deloitte is proud to support "Law Firm Musical."

www.deloitte.com

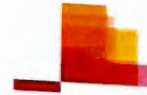


As used in this document, "Deloitte" means Deloitte LLP and its subsidiaries. Please see www.deloitte.com for a detailed description of the legal structure of Deloitte LLP and its subsidiaries. Certain services may not be available to attest clients under the rules and regulations of public accounting.

Copyright © 2011 Deloitte Development LLC. All rights reserved.
Member of Deloitte Touche Tohmatsu Limited

Our taxes may be higher, but you can buy
beer on Sunday. Take that Cobb County
and Gwinnett County chumps!

Brought to you by Fulton County and DeKalb
County, Georgia. Proudly serving beer on
Sunday and the theory of evolution.



pwc

PwC is proud to sponsor
'Law School Musical'

Go Donna!

From your Family at

MARTENSON, HASBROUCK & SIMON LLP

CHILIVIS COCHRAN LARKINS & BEVER, LLP
Is Proud to Sponsor "Law School Musical"

and

Congratulates its Partner

DAVID SCHAEFFER

For His Dedication To The Bard Show!

Garland, Samuel & Loeb
TRIAL ATTORNEYS

is proud to sponsor

**A COURTHOUSE LINE IX:
LAW SCHOOL MUSICAL**



**TROUTMAN
SANDERS**

Break a Leg, Shakara!



**ATLANTA BAR
FOUNDATION**
LAWYERS WHO SERVE

Your Ticket Does Good – Proceeds from A Courthouse Line IX: Law School Musical Support the Atlanta Bar Foundation

The Atlanta Bar Foundation, a Section 501(c) (3) organization and charitable arm of the Atlanta Bar Association, supports Atlanta Bar Association charitable projects that assist youth, provide pro bono legal services, promote public understanding of the law, and promote higher education through scholarships. Atlanta Bar projects supported by the Atlanta Bar Foundation include:

Summer Law Internship Program – Since 1993, outstanding students have been selected from local high schools such as D.M. Therrell High School, an Atlanta public law and government magnet school adopted by the Atlanta Bar Association in 1988. Participants in the internship program receive a six-week internship in local law firms, government agencies and corporations to encourage their interest in higher education and the practice of law. Currently, several active members of the Atlanta Bar Association are graduates of this program and others soon will graduate from law school, making this internship a proven success.

Minority and Diversity Clerkship Program – Since 1985, the Atlanta Bar Association has sponsored the Minority Clerkship Program (recently expanded as the Minority and Diversity Clerkship Program) with the assistance and cooperation of Atlanta law firms and the law schools at Emory University, University of Georgia, Georgia State University, John Marshall, and Mercer University.

Police Scholarship Fund – This college scholarship fund was established in 1980 to assist the children of Atlanta Police Department officers who have been killed or disabled in the line of duty. Since the Fund's inception, more than \$183,000 in scholarships have been awarded to the children of Atlanta police officers.

Truancy Intervention Project Georgia (TIP) - TIP was organized in late 1991 in response to the growing truancy problem in Fulton County. The program's objective is to serve children in Atlanta Public and Fulton County Schools who are chronically absent from school and as a result, either become involved with the Fulton County Juvenile Court or are referred for early intervention at the school level.

Atlanta Santa – Judges and lawyers of the Atlanta Bar Association serve as Santa and elves for non-profit organizations and children's hospitals during the holiday season.

Foundation Grant Program - In connection with the Foundation's support of Atlanta Bar Association charitable projects, in 2010, the Foundation established an annual grant program to provide assistance to pro bono legal service providers that serve the Atlanta community. Recipients have included Atlanta Volunteer Lawyers Foundation, Atlanta Legal Aid Society, Pro Bono Partnership of Atlanta, Georgia Justice Project, Georgia Asylum & Immigration (GAIN) and Georgia Appleseed. Foundation grants are announced at the Atlanta Bar Association's Celebrating Service luncheon, held in October of each year.

Letter from the Director

The legal market has faced some challenges over the last few years, but it is on the way up again. And we are all grateful for that. Of course, the only downside is that some of us have had less free time to devote to our outside interests this year . . . but that didn't stop the Bardians!! As they say in the biz: "the show must go on." Billable hours (and sleep) be damned! It's time to make some music and have some laughs.

So here we are again. Even me. After stepping aside for a few years as Director of the *Courthouse Line* productions and watching with pride as other members of the Bard stepped up to take the reins, I couldn't resist when asked to come back to direct our 2009 production, "Saving Private Practice." The real question, however, is how did they get me to do it yet again this year??? It's like having children, I guess: after a few months or years, you forget the pain and utter exhaustion and you are ready to do it again.

Directing *Courthouse Line IX -- Law School Musical* has been a wonderful experience, in large part because of the work of the dedicated Production Team. I cannot adequately express my gratitude to all the talented members of Courthouse Line IX: the gifted writers (Brian Johnson, Steve Lang and Les Wharton) who helped create a script that perfectly captures those good 'ole law school days (emphasis on "old" for many of us) but still is fresh and funny; the always unflappable Kim Myers, our music director extraordinaire, who pulled our singers and musicians together and transposed virtually every song in the show into a different key (sometimes more than one!); my co-producers, Maggie Vath and Alison Arce, who managed every important detail from theater contracts and tickets to dinner menus and horse heads; my Assistant Directors, Steve Lang and Les Wharton, who still don't understand how I convinced them to do this again, but who have come through whenever I needed them; Assistant Producer and Dance Coach Lisa Nelson, who authored the never-to-be-offered again individual rehearsal schedules for all 55 cast members; Cast Communications and Program Specialist Pam Corvelli, who did not let the impending birth of her child interfere with her show participation behind the scenes; Costume and Props Mistress Brandy Hughes, who made sure we had what we needed where we needed it; Bardians Kelly Koelker and Susan Atkinson, who supported our rehearsals as pianist and vocal coach; and, of course, the extraordinary Atlanta Bar staff members, Diane O'Steen and Byron Lomas, who do everything and anything for us year after year!

And then, there are the most important members of my personal team -- my husband, Dave, and my two boys. It's been a long year, and a particularly hard last few months . . . and they didn't complain (much!), even about the many missed dinners and late nights. This year -- at ages 7 and 5 -- my sons were finally old enough to come to a few rehearsals and watch (okay, so maybe they just came to play basketball and pool in the Church gymnasium, but it was still family time!). And Dave? Well, he agreed -- yet again -- to be part of the cast. Of course, playing a younger version of himself has been much easier than some of his prior roles. They know that I love this show, and I cannot thank them enough for letting me do it again.

Finally, I want to thank this year's fabulous cast -- many long-time Bardians, and many new faces. Trust me . . . the level of talent is phenomenal. And the way they can work together as one ensemble will blow you away! Most importantly, though, the camaraderie is amazing. Hanging out with this group of lawyers is just great!! I love you all.

The *Courthouse Line* productions have been a welcome distraction to the many of us lawyer/thespians of the Atlanta Bar for years -- more than ten years, in fact. The show gives us a chance to escape the hectic pace of our day jobs for, well . . . a hectic pace of a very different kind. During the weeks of rehearsals and on stage tonight, we can play some music, sing some songs, act a little crazy, marvel at the talents of our fellow lawyers, and just have fun. And, hopefully, we have created something that will give you a few hours of enjoyment, too.

SIT BACK AND ENJOY! AND MOST IMPORTANTLY . . . LAUGH!